

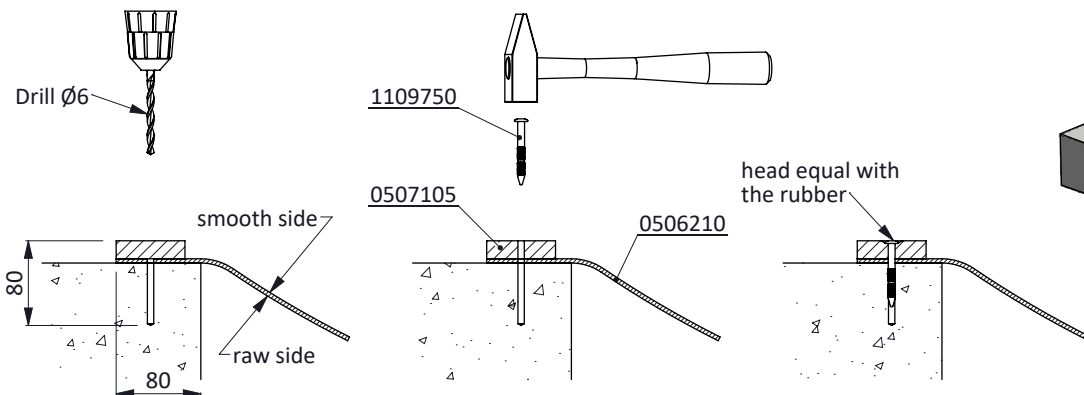
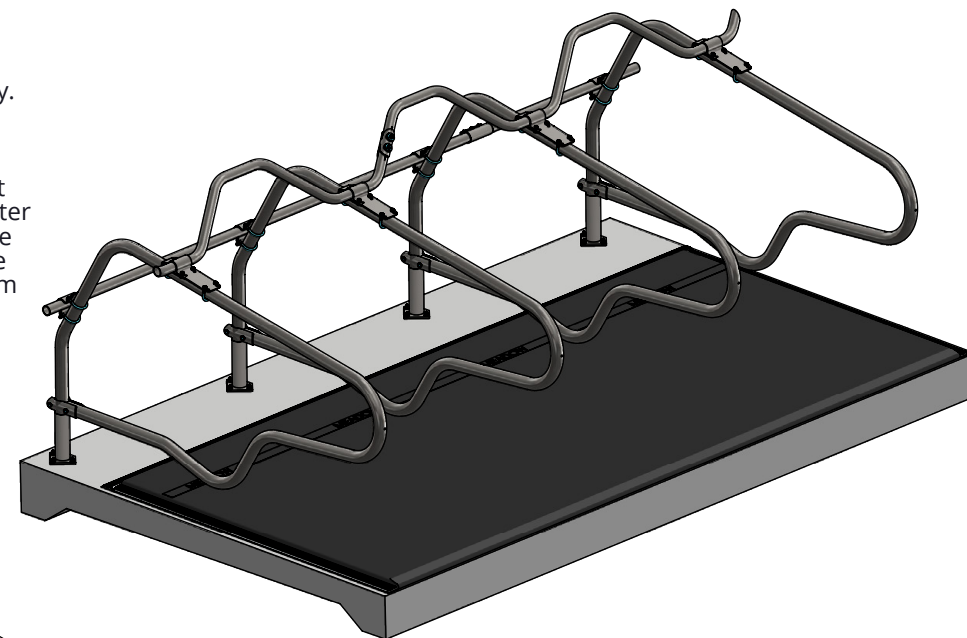
**Only mount dry "Meadow" polypress plates. (see storage instructions)**

### Step 1

Remove all loose cement and concrete particles. The surface should be smooth, clean and dry.

### Step 2

Draw a line over the total length of the row of stalls; 8 cm of the rear edge of the stalls. Unroll the top mat in this way, that after installation, the brand strap is positioned at the front of the box. Also place the top mat with the smooth side up, the edge against the draw line. After the installation of the mattress, the non-skid "rough" side of the top mat is facing up and is the brand strap is at the front of the box. Place the rubber mounting strip (0507105) on top of the mat, also against the drawn line. Fasten this strip with the supplied nails. Space the nails 33 cm apart.



**Attention: On both ends of the row of stalls mount the rubber strip 10 cm of the ends; this to leave room for the aluminium mounting strips which have to be mounted later.**

Sink the concrete nails into the rubber strip sufficiently, as these nails may not damage the top mat once this mat is turned over the strip. In case the rubber strip is too short, lengthen the strip by using the next piece. Fasten the ends well.

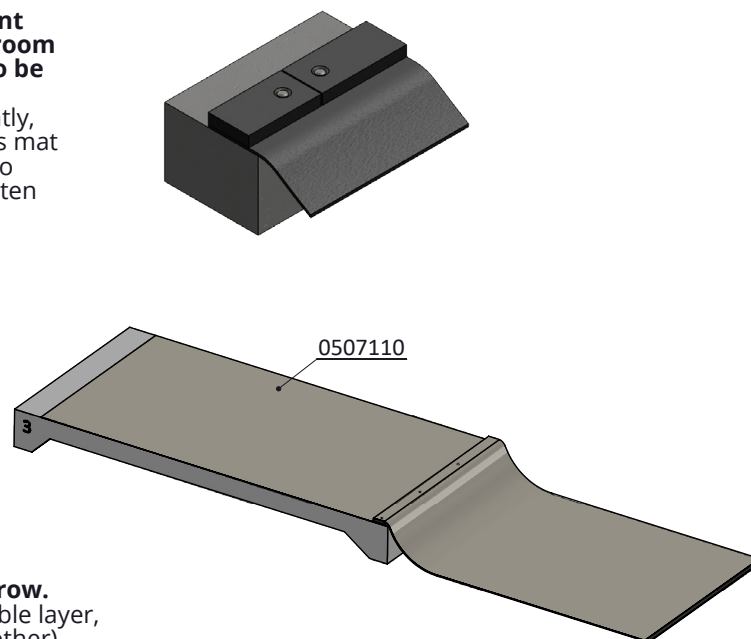
### Step 3

Placing the supplied PVC wrap (0507110). The wrap has to be placed in a double layer. ( 2 rolls of PVC wrap on top of each other)The wrap at the bottom is to protect the mattress against moisture from underneath. The wrap on the top is to facilitate the sliding of the top cover over the mattress (step 6).

Place the double layer of wrap over the concrete floor of the row of stalls and over the rolled out top mat. The middle ply of the double layer of wrap should be placed in the edge of the mounted rubber strip.

**Attention: leave 10cm spare on both ends of the row.**

When running out of wrap, lengthen with a new double layer, with an overlap of 1 meter. (4 layers on top of each other)



item no.	description
0506210	topmat for Meadow Next matras 200cm
0507105	rubber strip 60x17-25mm, per meter
0507121	latex foam plate 175x100x3,5 cm
0510801	alu-fastening profile 3m for rubber mat
1109750	nail 6,5x60mm
0507110	PVC wrap,roll 25x4m,for Meadow mattress

## Assembly manual for the Spinder Meadow mattress

**spinder**

DAIRY HOUSING CONCEPTS

Number:	0506100-A
Unit:	mm
Date:	20-7-2017

Tekening blijft ons eigendom en mag niet gekopieerd, aan derden getoond of op andere wijze worden gebruikt. Aan de gegevens op deze tekening kunnen geen rechten worden ontleend.

**Step 4**

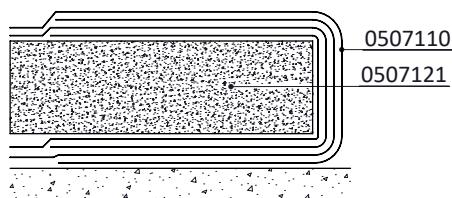
Place the sheets of latex foam (0507121) tight against each other, tight to the mounted rubber strip as well.

**Attention:** Leave a space of 10 cm on both ends of the row.

When required the sheets of foam can be easily cut to size with a wood hand saw.

**Step 5**

Pull the double layer of PVC wrap over the sheets of latex foam. Wrap the excess of the PVC wrap around the latex foam sheets at all the three sides.

**Step 6**

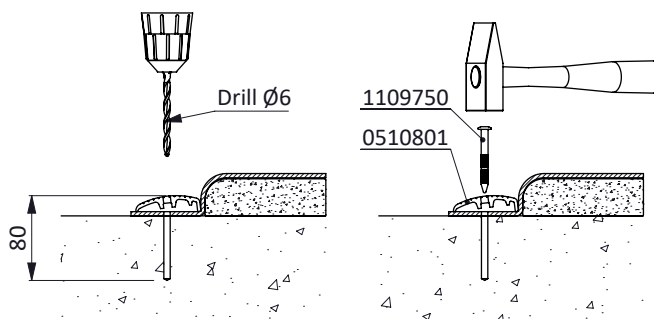
Use all available hands to place the top mat (0506210) over the latex foam sheets. Straighten and pull till the top mat is neatly tight around the rubber strip.

**Attention:** Mind that latex sheets do not move forward while pulling the top mat over.

**Step 7**

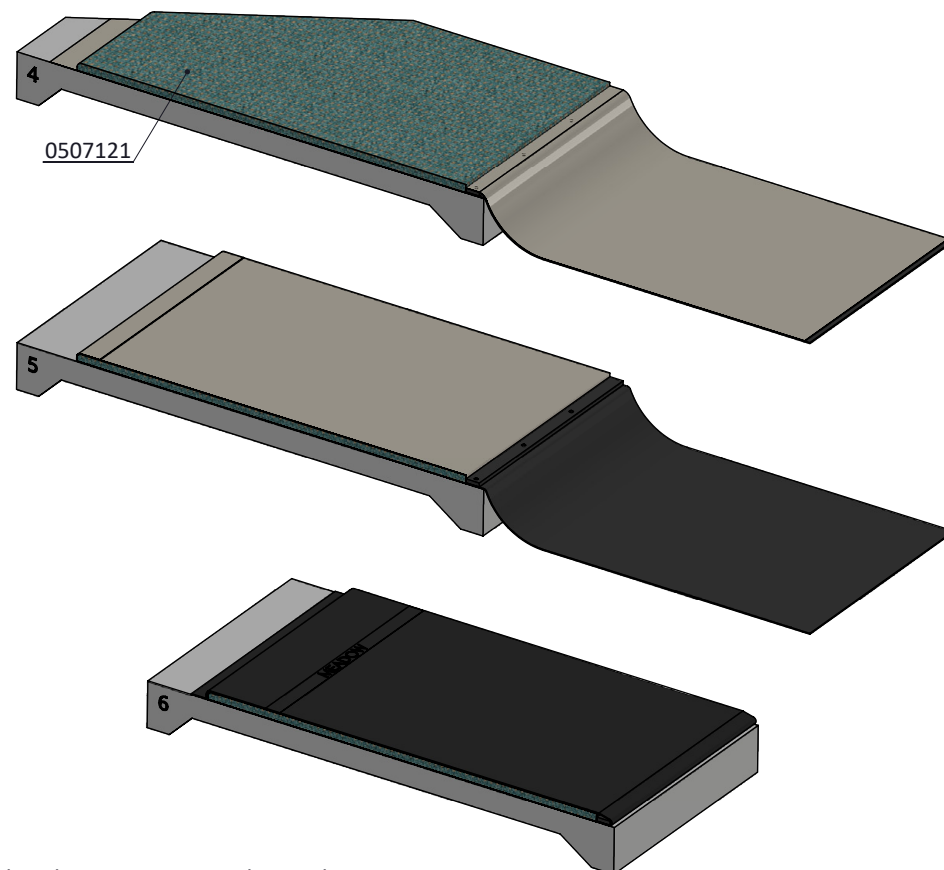
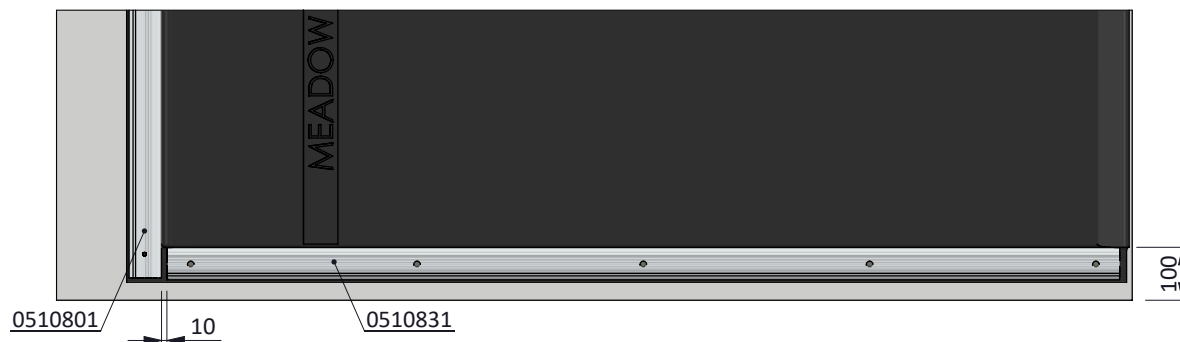
Fasten the top mat at the front with the supplied 3 meter aluminium strips (0510801). By placing the aluminium strips on the top mat tight against the latex foam sheets underneath and by nailing the aluminium strips down, the top mat is tightened further.

**Attention:** The aluminium strips run till the edge at both ends of the row of stalls.

**Step 8**

Fasten the top mat at both ends with the supplied aluminium strips of 1.80 meter. By placing the aluminium strips on the top mat tight against the latex foam sheets underneath and by nailing the aluminium strips down, the top mat is tightened further.

**Attention:** Leave a space of 10 mm between the aluminium strip at the front and the aluminium strip on the end of the mattress.



## Assembly manual for the Spinder Meadow mattress

**spinder**

DAIRY HOUSING CONCEPTS

Number:	0506100-A
Unit:	mm
Date:	20-7-2017

Tekening blijft ons eigendom en mag niet gekopieerd, aan derden getoond of op andere wijze worden gebruikt. Aan de gegevens op deze tekening kunnen geen rechten worden ontleend.

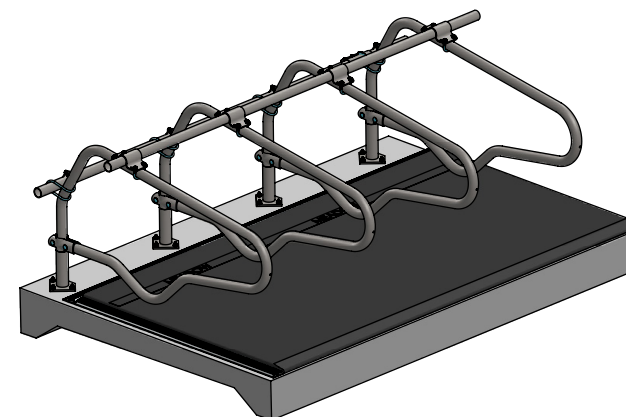
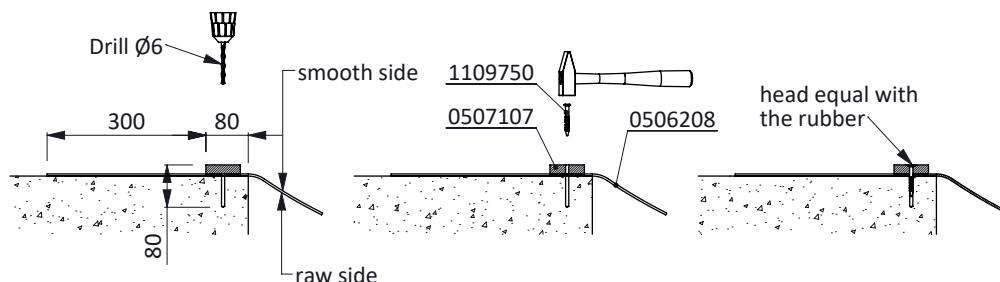
**Only mount dry "Meadow" polypress plates. (see storage instructions)**

### Step 1

Remove all loose cement and concrete particles. The surface should be smooth, clean and dry.

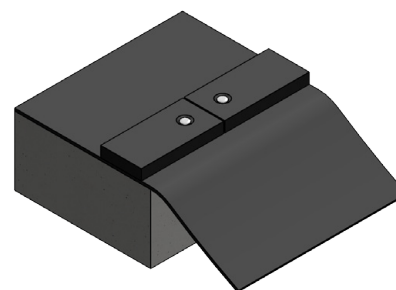
### Step 2

Draw a line over the total length of the row of stalls; 38 cm of the rear edge of the stalls. Unroll the top mat in this way, that after installation, the brand strap is positioned at the front of the box. Also place the top mat with the smooth side up, the edge against the draw line. After the installation of the mattress, the non-skid "rough" side of the top mat is facing up and is the brand strap is at the front of the box. Place the rubber mounting strip (0507107) on top of the mat, 30 cm from the drawn line. Fasten this strip with the supplied nails. Space the nails approximately 36,5 cm apart.



**Attention: On both ends of the row of stalls mount the rubber strip 10 cm of the ends; this to leave room for the aluminium mounting strips which have to be mounted later.**

Sink the concrete nails into the rubber strip sufficiently, as these nails may not damage the top mat once this mat is turned over the strip. In case the rubber strip is too short, lengthen the strip by using the next piece. Fasten the ends well.



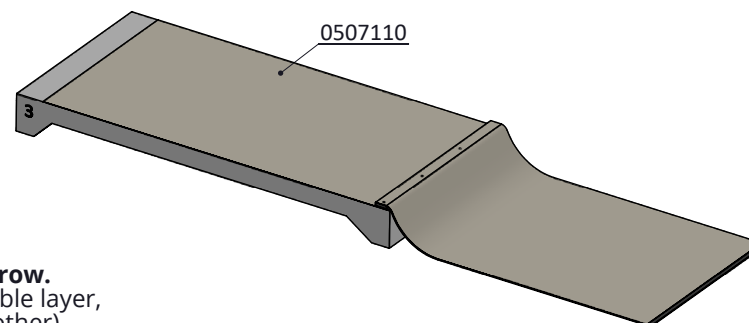
### Step 3

Placing the supplied PVC wrap (0507110). The wrap has to be placed in a double layer. ( 2 rolls of PVC wrap on top of each other)The wrap at the bottom is to protect the mattress against moisture from underneath. The wrap on the top is to facilitate the sliding of the top cover over the mattress (step 6).

Place the double layer of wrap over the concrete floor of the row of stalls and over the rolled out top mat. The middle ply of the double layer of wrap should be placed in the edge of the mounted rubber strip.

**Attention: leave 10cm spare on both ends of the row.**

When running out of wrap, lengthen with a new double layer, with an overlap of 1 meter. (4 layers on top of each other)



item no.	description
0506208	topmat for Meadow Next matras, W=180cm
0507107	plastic strip 60x17mm L=3.00 mtr, Meadow
0507110	PVC wrap,roll 25x4m,for Meadow mattress
0507130	latex foam plate 125x100x3,0 cm
0510801	alu-fastening profile 3m for rubber mat
1109750	nail 6,5x60mm

## Assembly manual for the Spinder Meadow mattress 135cm

**spinder**

DAIRY HOUSING CONCEPTS

Number: 0506135-A

Unit: mm

Date: 5-3-2020

Tekening blijft ons eigendom en mag niet gekopieerd, aan derden getoond of op andere wijze worden gebruikt. Aan de gegevens op deze tekening kunnen geen rechten worden ontleend.

**Step 4**

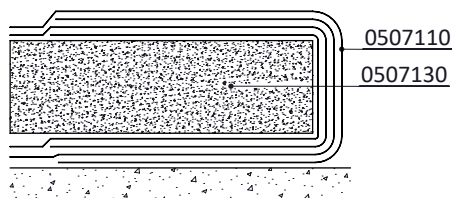
Place the sheets of latex foam (0507130) tight against each other, tight to the mounted rubber strip as well.

**Attention:** Leave a space of 10 cm on both ends of the row.

When required the sheets of foam can be easily cut to size with a wood hand saw.

**Step 5**

Pull the double layer of PVC wrap over the sheets of latex foam. Wrap the excess of the PVC wrap around the latex foam sheets at all the three sides.

**Step 6**

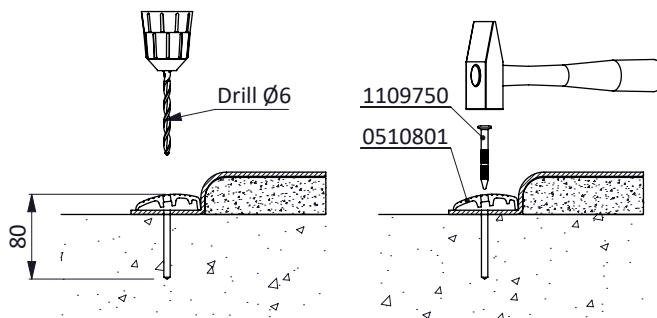
Use all available hands to place the top mat (0506208) over the latex foam sheets. Straighten and pull till the top mat is neatly tight around the rubber strip.

**Attention:** Mind that latex sheets do not move forward while pulling the top mat over.

**Step 7**

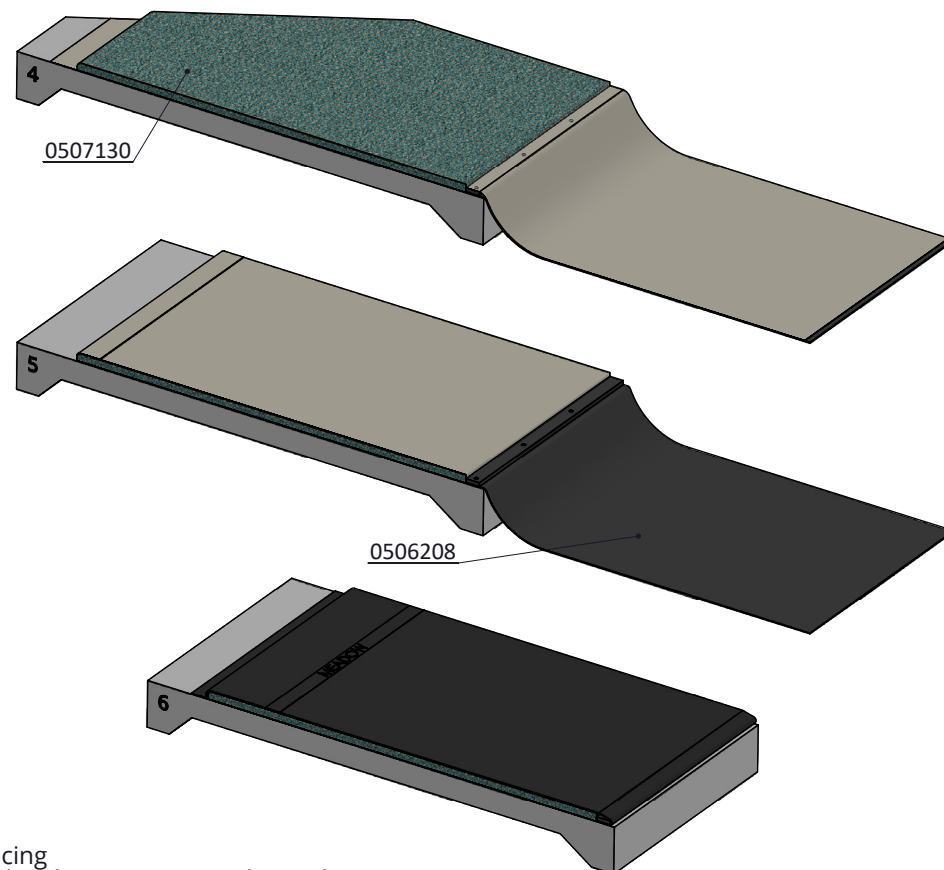
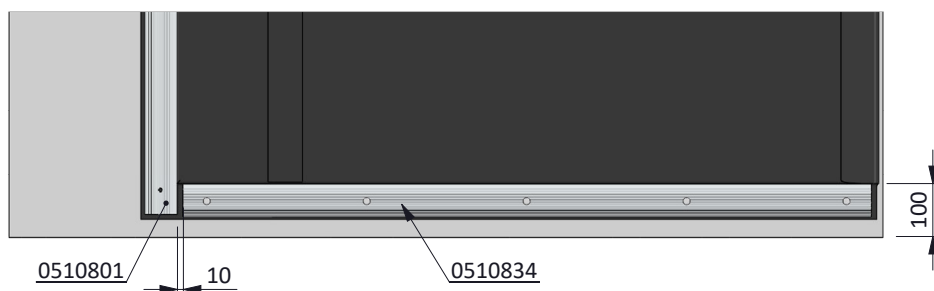
Fasten the top mat at the front with the supplied 3 meter aluminium strips (0510801). By placing the aluminium strips on the top mat tight against the latex foam sheets underneath and by nailing the aluminium strips down, the top mat is tightened further.

**Attention:** The aluminium strips run till the edge at both ends of the row of stalls.

**Step 8**

Fasten the top mat at both ends with the supplied aluminium strips (0510834) of 1.30 meter. By placing the aluminium strips on the top mat tight against the latex foam sheets underneath and by nailing the aluminium strips down, the top mat is tightened further.

**Attention:** Leave a space of 10 mm between the aluminium strip at the front and the aluminium strip on the end of the mattress.



## Assembly manual for the Spinder Meadow mattress 135cm

**spinder**

DAIRY HOUSING CONCEPTS

Number: 0506135-A

Unit: mm

Date: 5-3-2020

Tekening blijft ons eigendom en mag niet gekopieerd, aan derden getoond of op andere wijze worden gebruikt. Aan de gegevens op deze tekening kunnen geen rechten worden ontleend.

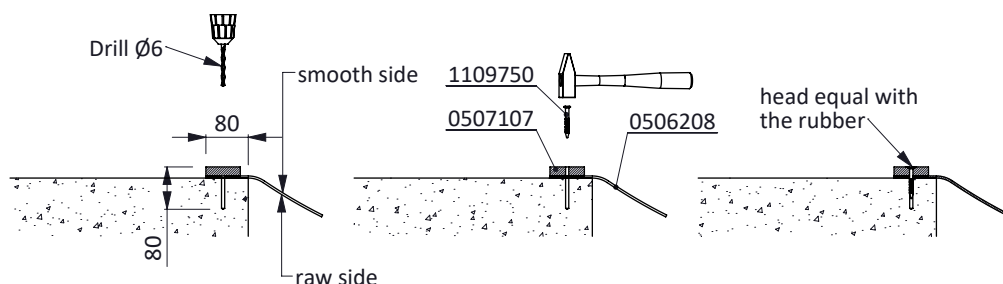
**Only mount dry "Meadow" polypress plates. (see storage instructions)**

### Step 1

Remove all loose cement and concrete particles. The surface should be smooth, clean and dry.

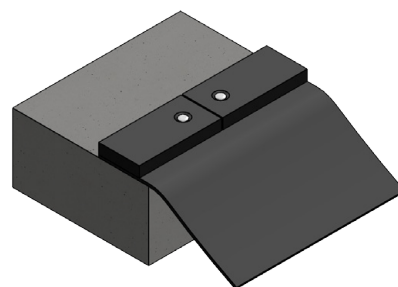
### Step 2

Draw a line over the total length of the row of stalls; 8 cm of the rear edge of the stalls. Unroll the top mat in this way, that after installation, the brand strap is positioned at the front of the box. Also place the top mat with the smooth side up, the edge against the draw line. After the installation of the mattress, the non-skid "rough" side of the top mat is facing up and is the brand strap is at the front of the box. Place the rubber mounting strip (0507107) on top of the mat, the edge against the drawn line. Fasten this strip with the supplied nails. Space the nails approximately 36,5 cm apart.



**Attention: On both ends of the row of stalls mount the rubber strip 10 cm of the ends; this to leave room for the aluminium mounting strips which have to be mounted later.**

Sink the concrete nails into the rubber strip sufficiently, as these nails may not damage the top mat once this mat is turned over the strip. In case the rubber strip is too short, lengthen the strip by using the next piece. Fasten the ends well.



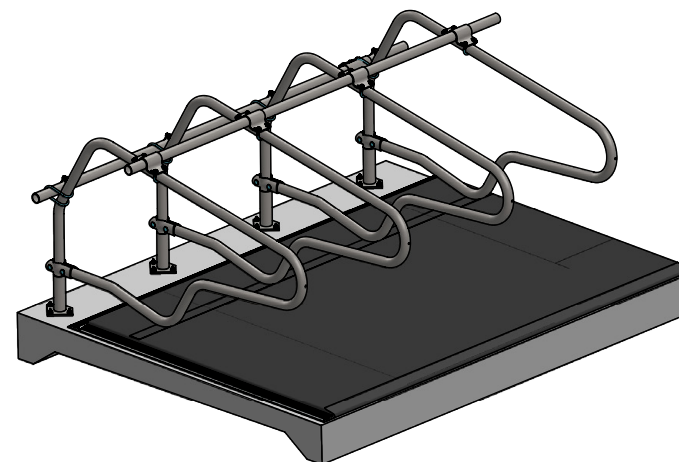
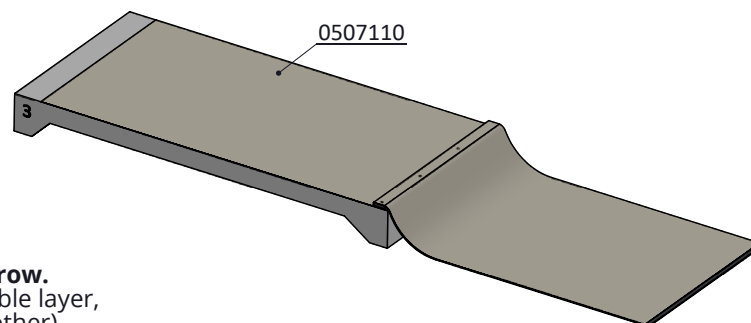
### Step 3

Placing the supplied PVC wrap (0507110). The wrap has to be placed in a double layer. ( 2 rolls of PVC wrap on top of each other)The wrap at the bottom is to protect the mattress against moisture from underneath. The wrap on the top is to facilitate the sliding of the top cover over the mattress (step 6).

Place the double layer of wrap over the concrete floor of the row of stalls and over the rolled out top mat. The middle ply of the double layer of wrap should be placed in the edge of the mounted rubber strip.

**Attention: leave 10cm spare on both ends of the row.**

When running out of wrap, lengthen with a new double layer, with an overlap of 1 meter. (4 layers on top of each other)



item no.	description
0506208	topmat for Meadow Next matras, W=180cm
0507107	plastic strip 60x17mm L=3.00 mtr, Meadow
0507110	PVC wrap,roll 25x4m,for Meadow mattress
0507160	latex foam plate 125x100x3,0 cm
0510801	alu-fastening profile 3m for rubber mat
1109750	nail 6,5x60mm

## Assembly manual for the Spinder Meadow mattress 165cm

**spinder**

DAIRY HOUSING CONCEPTS

Number: 0506165-A

Unit: mm

Date: 5-3-2020

Tekening blijft ons eigendom en mag niet gekopieerd, aan derden getoond of op andere wijze worden gebruikt. Aan de gegevens op deze tekening kunnen geen rechten worden ontleend.



**Step 4**

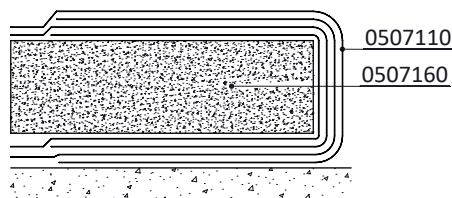
Place the sheets of latex foam (0507160) tight against each other, tight to the mounted rubber strip as well.

**Attention:** Leave a space of 10 cm on both ends of the row.

When required the sheets of foam can be easily cut to size with a wood hand saw.

**Step 5**

Pull the double layer of PVC wrap over the sheets of latex foam. Wrap the excess of the PVC wrap around the latex foam sheets at all the three sides.

**Step 6**

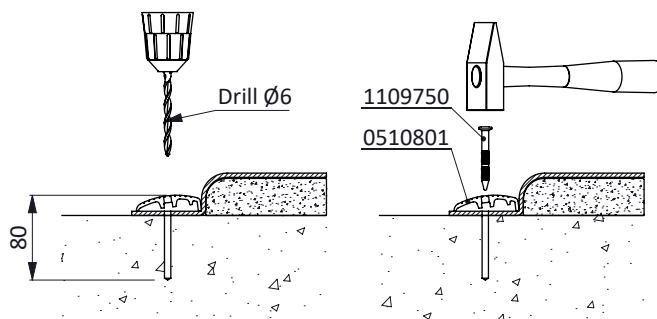
Use all available hands to place the top mat (0506208) over the latex foam sheets. Straighten and pull till the top mat is neatly tight around the rubber strip.

**Attention:** Mind that latex sheets do not move forward while pulling the top mat over.

**Step 7**

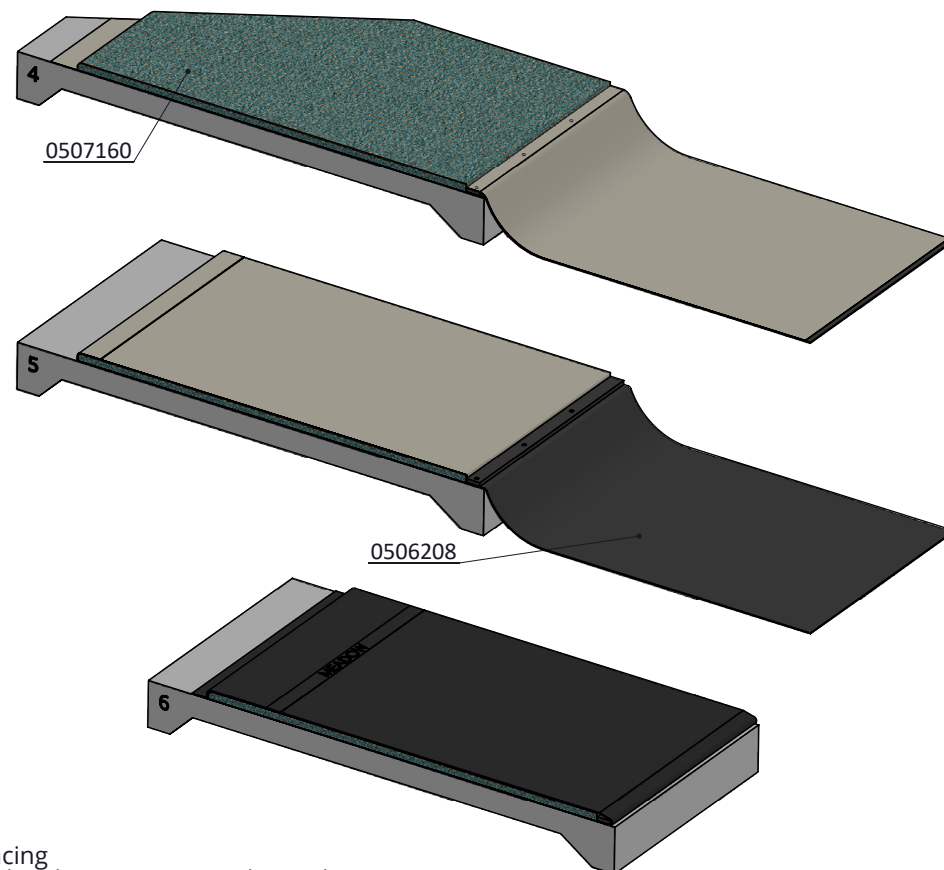
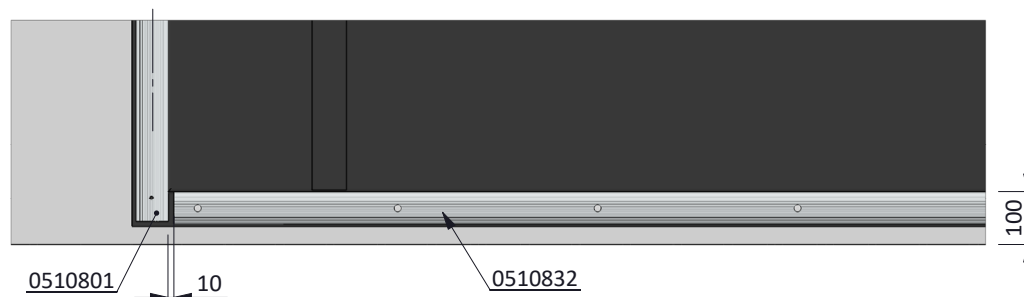
Fasten the top mat at the front with the supplied 3 meter aluminium strips (0510801). By placing the aluminium strips on the top mat tight against the latex foam sheets underneath and by nailing the aluminium strips down, the top mat is tightened further.

**Attention:** The aluminium strips run till the edge at both ends of the row of stalls.

**Step 8**

Fasten the top mat at both ends with the supplied aluminium strips (0510832) of 1.60 meter. By placing the aluminium strips on the top mat tight against the latex foam sheets underneath and by nailing the aluminium strips down, the top mat is tightened further.

**Attention:** Leave a space of 10 mm between the aluminium strip at the front and the aluminium strip on the end of the mattress.



## Assembly manual for the Spinder Meadow mattress 165cm

**spinder**  
DAIRY HOUSING CONCEPTS

Number:	0506165-A
Unit:	mm
Date:	5-3-2020

Tekening blijft ons eigendom en mag niet gekopieerd, aan derden getoond of op andere wijze worden gebruikt. Aan de gegevens op deze tekening kunnen geen rechten worden ontleend.